

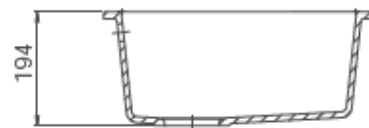
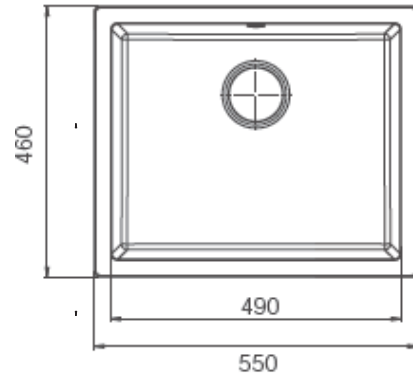


COMO

Model: WAL-ZYO_X10C



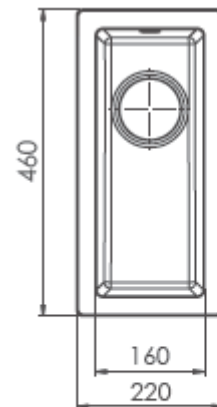
DIMENSIONS - 550x460x194 mm



Model: WAL-ZYO_X10A



DIMENSIONS - 220x460x144 mm

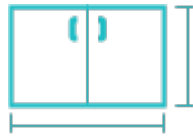
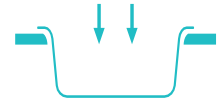
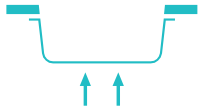


KEY DATA

Series	Como
Model	WAL-ZYO_X10C
Material	80% German quartz and 20% resin
Hygiene Technology	Silver Ions providing Anti-microbial protection against mold, bacteria and yeasts
Fixings	Retaining Clips supplied
Cut-out	Instructions provided in the box
Waste	1 x 90mm basket waste with overflow, DN50 Outlet
Tap Holes	Tap Holes are provided upon request, detailed instructions are included for the installer to drill these to suit onsite
Weight net	10 kg
Volume	4857 cm ³
Bowl Size	550x 460x 194
Carton Size	750x 580x 260
Warranty	Lifetime warranty (refer to wallabycorp.com for conditions of warranty)

Series	Como
Model	WAL-ZYO_X10A
Material	80% German quartz and 20% resin
Hygiene Technology	Silver Ions providing Anti-microbial protection against mould, bacteria and yeasts
Fixings	Retaining Clips supplied
Cut-out	Instructions provided in the box
Waste	1 x 90mm basket waste with overflow, DN50 Outlet
Tap Holes	Tap Holes are provided upon request, detailed instructions are included for the installer to drill these to suit onsite
Weight net	4 kg
Volume	2035 cm ³
Bowl Size	220x 460x 144
Carton Size	420x 580x 220
Warranty	Lifetime warranty (refer to wallabycorp.com for conditions of warranty)

LEGEND

REVERSIBLE

CABINET DIMENSIONS

FLUSHMOUNT

UNDERMOUNT

WASTE INCLUDED

SINGLE BOWL

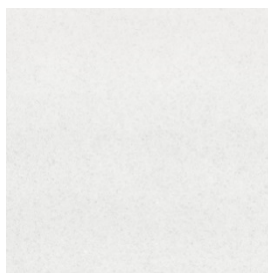
1,5 BOWL

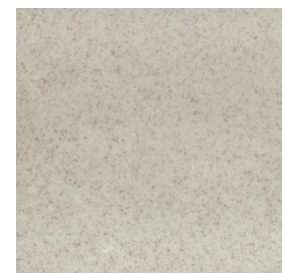
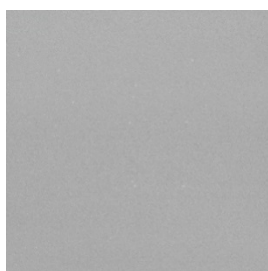
DOUBLE BOWL

STANDARD OVERFLOW

SHORT OVERFLOW

TWO-SIDED OVERFLOW

NO OVERFLOW
STANDARD COLOURS

WHITE

LIGHT BEIGE

SAND

GREY METALLIC

GRAPHITE

BLACK METALLIC

Please refer to our website for the full colour range

*Please note measurements are within 2-3mm of factory tolerance. Made in accordance with EN 13310 standard. It is advisable to check dimensions of physical products when measuring prior to installation.